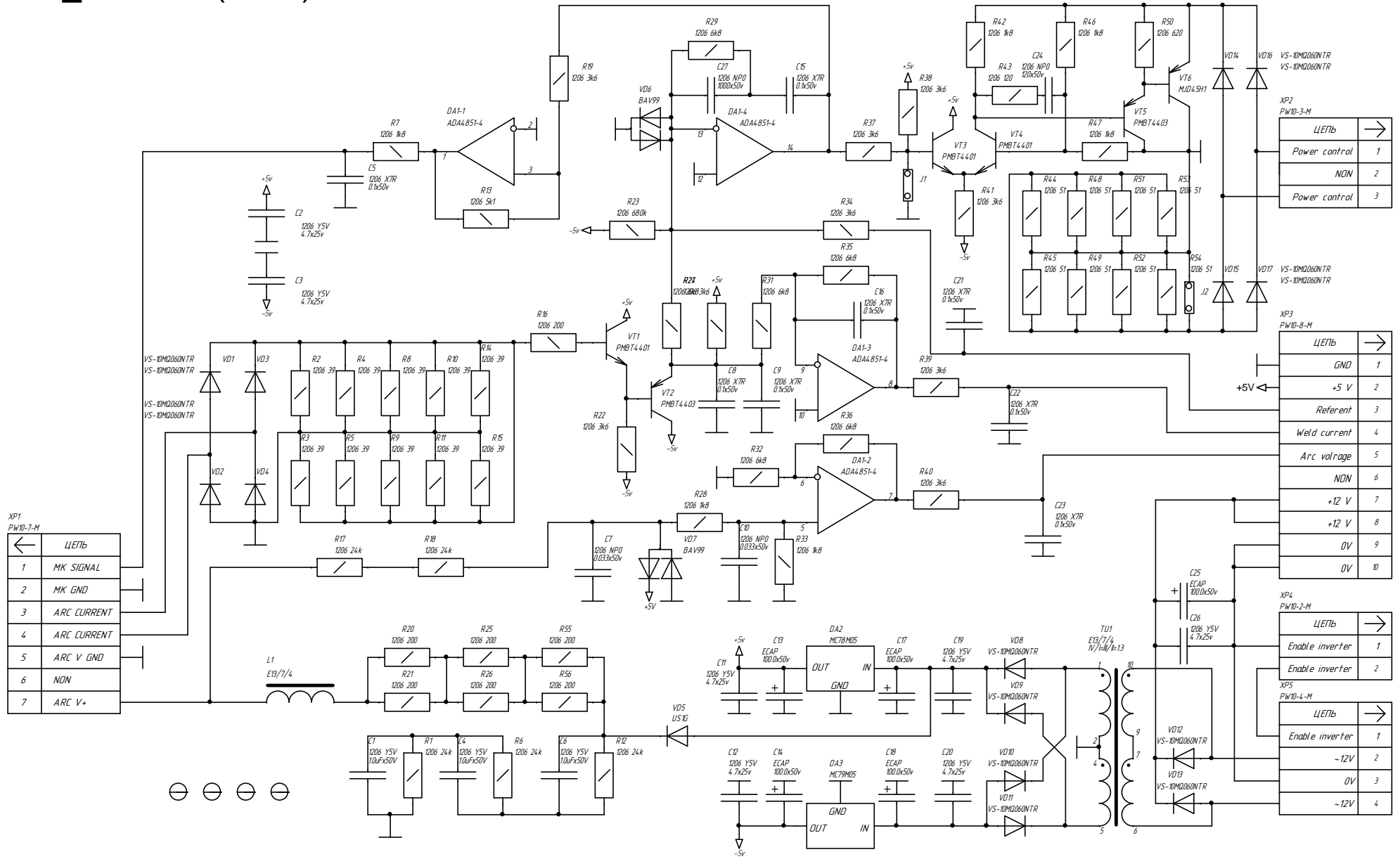


CC_TIG-200 (1150)



XP1
PW10-7-M

←	ЦЕПЬ
1	MK SIGNAL
2	MK GND
3	ARC CURRENT
4	ARC CURRENT
5	ARC V GND
6	NDN
7	ARC V+

XP2
PW10-3-M

ЦЕПЬ	→
Power control	1
NDN	2
Power control	3

XP3
PW10-8-M

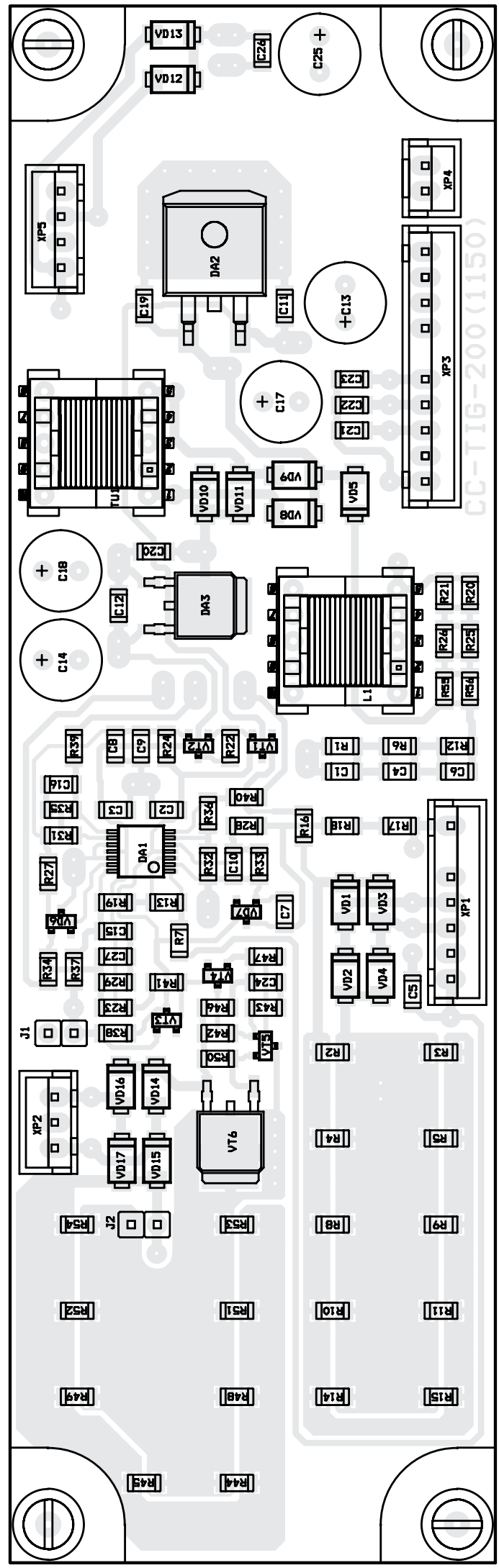
ЦЕПЬ	→
GND	1
+5 V	2
Referent	3
Weld current	4
Arc voltage	5
NDN	6
+12 V	7
+12 V	8
0V	9
0V	10

XP4
PW10-2-M

ЦЕПЬ	→
Enable inverter	1
Enable inverter	2

XP5
PW10-4-M

ЦЕПЬ	→
Enable inverter	1
-12V	2
0V	3
-12V	4



CC-TIG-200(1150)